

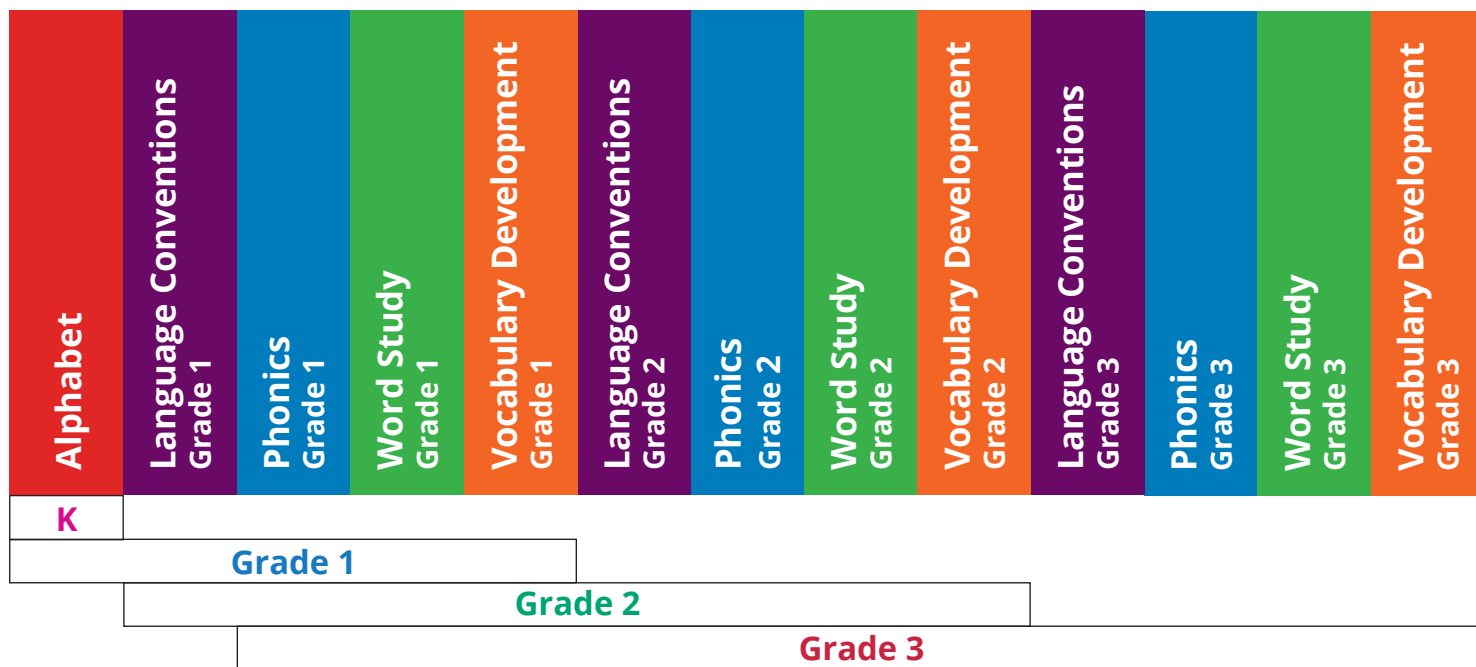
# LANGUAGE FOUNDATIONS

## Language Foundations Card Distribution

The following charts illustrate the organization of the lesson cards across the Scholastic *Language Foundations* Kits. To support the wide range of student needs in the classroom, each grade-level kit includes new lesson cards as well as lesson cards from the previous grade(s).

This repetition of lesson cards from the previous grade(s) provides opportunities for review of prior knowledge, for differentiated instruction, and for reaching back to provide targeted instruction to close learning gaps along the phonics continuum. This repetition also supports instruction in combined grades classrooms.

### Continuum of Lesson Cards



### Cards per Grade

	Kindergarten	Grade 1	Grade 2	Grade 3
Alphabet Lesson Cards	27	27		
Phonics Lesson Cards		34	34 Grade 1 Cards 3 new Grade 2 Cards	37 Grades 1 & 2 Cards
Word Study Lesson Cards		16	16 Grade 1 Cards 2 new Grade 2 Cards	18 Grades 1 & 2 Cards 2 new Grade 3 Cards
Vocabulary Development Lesson Cards		12	12 Grade 1 Cards	12 Grades 1 & 2 Cards 2 new Grade 3 Cards
Language Conventions Lesson Cards		10	10 Grade 1 Cards 12 new Grade 2 Cards	12 Grade 2 Cards 7 new Grade 3 Cards
Total Cards per Grade	27	99	89	90

## Alphabet Lesson Cards

Suggested sequence

K	1	2	3
ABCs card	ABCs card		
Alphabet: M	Alphabet: M		
Alphabet: S	Alphabet: S		
Alphabet: T	Alphabet: T		
Alphabet: A	Alphabet: A		
Alphabet: P	Alphabet: P		
Alphabet: C	Alphabet: C		
Alphabet: N	Alphabet: N		
Alphabet: D	Alphabet: D		
Alphabet: R	Alphabet: R		
Alphabet: I	Alphabet: I		
Alphabet: H	Alphabet: H		
Alphabet: B	Alphabet: B		
Alphabet: L	Alphabet: L		
Alphabet: F	Alphabet: F		
Alphabet: O	Alphabet: O		
Alphabet: J	Alphabet: J		
Alphabet: X	Alphabet: X		
Alphabet: K	Alphabet: K		
Alphabet: E	Alphabet: E		
Alphabet: G	Alphabet: G		
Alphabet: V	Alphabet: V		
Alphabet: W	Alphabet: W		
Alphabet: U	Alphabet: U		
Alphabet: Y	Alphabet: Y		
Alphabet: Q	Alphabet: Q		
Alphabet: Z	Alphabet: Z		

## Phonics Lesson Cards

Suggested sequence

K	1	2	3
	Short Vowels: Short <i>a</i>	Short Vowels: Short <i>a</i>	Short Vowels: Short <i>a</i>
	Short Vowels: Short <i>i</i>	Short Vowels: Short <i>i</i>	Short Vowels: Short <i>i</i>
	Short Vowels: Short <i>o</i>	Short Vowels: Short <i>o</i>	Short Vowels: Short <i>o</i>
	Short Vowels: Short <i>e</i>	Short Vowels: Short <i>e</i>	Short Vowels: Short <i>e</i>
	Short Vowels: Short <i>u</i>	Short Vowels: Short <i>u</i>	Short Vowels: Short <i>u</i>
	Consonant Blends: <i>s</i> - Blends	Consonant Blends: <i>s</i> - Blends	Consonant Blends: <i>s</i> - Blends
	Consonant Blends: <i>l</i> - Blends	Consonant Blends: <i>l</i> - Blends	Consonant Blends: <i>l</i> - Blends
	Consonant Blends: <i>r</i> - Blends	Consonant Blends: <i>r</i> - Blends	Consonant Blends: <i>r</i> - Blends
	Digraph <i>sh</i>	Digraph <i>sh</i>	Digraph <i>sh</i>
	Digraph <i>th</i>	Digraph <i>th</i>	Digraph <i>th</i>
	Digraphs <i>ch</i> , <i>tch</i>	Digraphs <i>ch</i> , <i>tch</i>	Digraphs <i>ch</i> , <i>tch</i>
	FLSZ Spelling Rule	FLSZ Spelling Rule	FLSZ Spelling Rule
	Digraph <i>ck</i>	Digraph <i>ck</i>	Digraph <i>ck</i>
	Digraph <i>wh</i>	Digraph <i>wh</i>	Digraph <i>wh</i>
	Digraph <i>ng/nk</i> Blend	Digraph <i>ng/nk</i> Blend	Digraph <i>ng/nk</i> Blend
	Digraph <i>ph</i>	Digraph <i>ph</i>	Digraph <i>ph</i>
	Ending Spelling Pattern <i>dge</i>	Ending Spelling Pattern <i>dge</i>	Ending Spelling Pattern <i>dge</i>
		Soft <i>C</i>	Soft <i>C</i>
		Soft <i>G</i>	Soft <i>G</i>
	Long Vowels: Final <i>e</i>	Long Vowels: Final <i>e</i>	Long Vowels: Final <i>e</i>
	Long Vowels: Long <i>a</i>	Long Vowels: Long <i>a</i>	Long Vowels: Long <i>a</i>
	Long Vowels: Long <i>e</i>	Long Vowels: Long <i>e</i>	Long Vowels: Long <i>e</i>
	Long Vowels: Long <i>i</i>	Long Vowels: Long <i>i</i>	Long Vowels: Long <i>i</i>
	Long Vowels: Long <i>o</i>	Long Vowels: Long <i>o</i>	Long Vowels: Long <i>o</i>
	Long Vowels: Long <i>u</i>	Long Vowels: Long <i>u</i>	Long Vowels: Long <i>u</i>
	Complex Vowels: <i>r</i> -Controlled Vowels <i>ar</i> , <i>or</i> , <i>ore</i>	Complex Vowels: <i>r</i> -Controlled Vowels <i>ar</i> , <i>or</i> , <i>ore</i>	Complex Vowels: <i>r</i> -Controlled Vowels <i>ar</i> , <i>or</i> , <i>ore</i>
	Complex Vowels: <i>r</i> -Controlled Vowels <i>er</i> , <i>ir</i> , <i>ur</i>	Complex Vowels: <i>r</i> -Controlled Vowels <i>er</i> , <i>ir</i> , <i>ur</i>	Complex Vowels: <i>r</i> -Controlled Vowels <i>er</i> , <i>ir</i> , <i>ur</i>
	Complex Vowels: Variant Vowels Long and Short <i>oo</i>	Complex Vowels: Variant Vowels Long and Short <i>oo</i>	Complex Vowels: Variant Vowels Long and Short <i>oo</i>
	Complex Vowels: Variant Vowels <i>a</i> , <i>au</i> , <i>aw</i>	Complex Vowels: Variant Vowels <i>a</i> , <i>au</i> , <i>aw</i>	Complex Vowels: Variant Vowels <i>a</i> , <i>au</i> , <i>aw</i>

# LANGUAGE FOUNDATIONS

## Phonics Lesson Cards cont.

Suggested sequence

K	1	2	3
	Complex Vowels: Diphthongs <i>oi, oy</i>	Complex Vowels: Diphthongs <i>oi, oy</i>	Complex Vowels: Diphthongs <i>oi, oy</i>
	Complex Vowels: Diphthongs <i>ou, ow</i>	Complex Vowels: Diphthongs <i>ou, ow</i>	Complex Vowels: Diphthongs <i>ou, ow</i>
	Complex Vowels: <i>r</i> -Controlled Vowels <i>are, air, ear</i>	Complex Vowels: <i>r</i> -Controlled Vowels <i>are, air, ear</i>	Complex Vowels: <i>r</i> -Controlled Vowels <i>are, air, ear</i>
	Variant Vowels <i>all, oll, ull</i>	Variant Vowels <i>all, oll, ull</i>	Variant Vowels <i>all, oll, ull</i>
	Silent Letters <i>kn, wr, mb, gh, gn, ch</i>	Silent Letters <i>kn, wr, mb, gh, gn, ch</i>	Silent Letters <i>kn, wr, mb, gh, gn, ch</i>
	Long Vowel Spelling Patterns <i>ind, ild</i>	Long Vowel Spelling Patterns <i>ind, ild</i>	Long Vowel Spelling Patterns <i>ind, ild</i>
	Long Vowel Spelling Patterns <i>old, olt, ost</i>	Long Vowel Spelling Patterns <i>old, olt, ost</i>	Long Vowel Spelling Patterns <i>old, olt, ost</i>
		Schwa <i>a</i>	Schwa <i>a</i>

## Word Study Lesson Cards

Suggested sequence

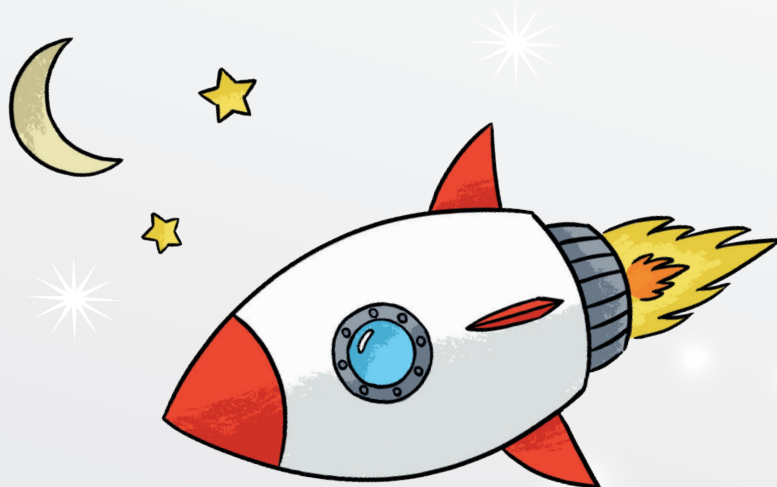
K	1	2	3
	Plurals	Plurals	Plurals
	Irregular Plurals	Irregular Plurals	Irregular Plurals
	Contractions	Contractions	Contractions
	Inflectional Ending <i>-ed</i>	Inflectional Ending <i>-ed</i>	Inflectional Ending <i>-ed</i>
	Inflectional Ending <i>-ing</i>	Inflectional Ending <i>-ing</i>	Inflectional Ending <i>-ing</i>
	Compound Words	Compound Words	Compound Words
	Inflectional Endings With Spelling Changes	Inflectional Endings With Spelling Changes	Inflectional Endings With Spelling Changes
	Prefixes	Prefixes	Prefixes
		Prefixes <i>de, a</i> (schwa <i>a</i> ), <i>co, uni, bi, tri</i>	Prefixes <i>de, a</i> (schwa <i>a</i> ), <i>co, uni, bi, tri</i>
			Prefixes <i>trans, post, inter, intra, over, under, sub, non, in, im, anti, mid</i>
	Suffixes	Suffixes	Suffixes
	Suffixes <i>er, or, est</i>	Suffixes <i>er, or, est</i>	Suffixes <i>er, or, est</i>
		Suffixes <i>ure, ist, ish, able, ible, ion, ful, less, ness</i>	Suffixes <i>ure, ist, ish, able, ible, ion, ful, less, ness</i>
			Suffixes <i>ic, al, ial, ous, ive</i>
	Final-e Syllables	Final-e Syllables	Final-e Syllables
	Closed Syllables	Closed Syllables	Closed Syllables
	Vowel-Team Syllables	Vowel-Team Syllables	Vowel-Team Syllables
	Open Syllables	Open Syllables	Open Syllables
	<i>r</i> -Controlled Vowel Syllables	<i>r</i> -Controlled Vowel Syllables	<i>r</i> -Controlled Vowel Syllables
	Consonant + <i>le</i> Syllables	Consonant + <i>le</i> Syllables	Consonant + <i>le</i> Syllables

# LANGUAGE FOUNDATIONS

## Vocabulary Lesson Cards

Suggested sequence

K	1	2	3
	Teaching Vocabulary (Part 1)	Teaching Vocabulary (Part 1)	Teaching Vocabulary (Part 1)
	Teaching Vocabulary (Part 2)	Teaching Vocabulary (Part 2)	Teaching Vocabulary (Part 2)
	Sorting and Categorizing (Part 1)	Sorting and Categorizing (Part 1)	Sorting and Categorizing (Part 1)
	Sorting and Categorizing (Part 2)	Sorting and Categorizing (Part 2)	Sorting and Categorizing (Part 2)
	Understanding Synonyms	Understanding Synonyms	Understanding Synonyms
	Words Can Vary Slightly in Meaning	Words Can Vary Slightly in Meaning	Words Can Vary Slightly in Meaning
	Understanding Antonyms	Understanding Antonyms	Understanding Antonyms
	Semantic Features of Words	Semantic Features of Words	Semantic Features of Words
	Words With Multiple Meanings	Words With Multiple Meanings	Words With Multiple Meanings
	Independent Word Learning Strategies (Part 1)	Independent Word Learning Strategies (Part 1)	Independent Word Learning Strategies (Part 1)
	Independent Word Learning Strategies (Part 2)	Independent Word Learning Strategies (Part 2)	Independent Word Learning Strategies (Part 2)
	Using a Dictionary/Using a Thesaurus	Using a Dictionary/Using a Thesaurus	Using a Dictionary/Using a Thesaurus
			Figurative Language: Literal and Figurative Meanings
			Puns



# LANGUAGE FOUNDATIONS

CARD TYPE	Language Conventions Lesson Cards			
	Suggested sequence within each concept			
	K	1	2	3
<b>GRAMMAR</b>				
<b>VERBS</b>		Verbs (Action Words)	Verbs (Action Words)	
			"To Be" Verbs	"To Be" Verbs
		Past Tense and Present Tense	Past Tense and Present Tense	
		Future Tense	Future Tense	
				Linking Verbs
				Progressive Tense Verbs
<b>NOUNS</b>		Nouns (People, Places, Things)	Nouns (People, Places, Things)	
			Collective and Abstract Nouns	Collective and Abstract Nouns
<b>PRONOUNS</b>		Pronouns (Pronoun "I")	Pronouns (Pronoun "I")	
			Personal Pronouns—Subject and Object Pronouns	Personal Pronouns—Subject and Object Pronouns
			Personal Pronouns—Possessives	Personal Pronouns—Possessives
<b>ADJECTIVES &amp; ADVERBS</b>		Adjectives (Describing Nouns)	Adjectives (Describing Nouns)	
			Comparative and Superlative Adjectives	Comparative and Superlative Adjectives
				Interrogative Adjectives
			Adverbs	Adverbs
<b>CONJUNCTIONS &amp; PREPOSITIONS</b>		Conjunctions (Joining Words)	Conjunctions (Joining Words)	
			Co-ordinating Conjunctions	Co-ordinating Conjunctions
			Subordinating Conjunctions	Subordinating Conjunctions
				Prepositions



# LANGUAGE FOUNDATIONS

CARD TYPE	Language Conventions Lesson Cards			
	Suggested sequence within each concept			
	K	1	2	3
<b>SYNTAX &amp; SENTENCE STRUCTURE</b>				
		Types of Sentences— Declarative and Exclamatory	Types of Sentences— Declarative and Exclamatory	
		Types of Sentences— Imperative and Interrogative	Types of Sentences— Imperative and Interrogative	
		Compound Sentences	Compound Sentences	
				Complex Sentences
				Adverbial Clauses

CARD TYPE	Language Conventions Lesson Cards			
	Suggested sequence within each concept			
	K	1	2	3
<b>CAPITALIZATION &amp; PUNCTUATION</b>				
			Capitalization of Proper Nouns	Capitalization of Proper Nouns
			Commas in Lists	Commas in Lists
			Quotation Marks for Direct Speech	Quotation Marks for Direct Speech
			Apostrophes for Possessives	Apostrophes for Possessives
				Capitals, Commas, and Quotation Marks

