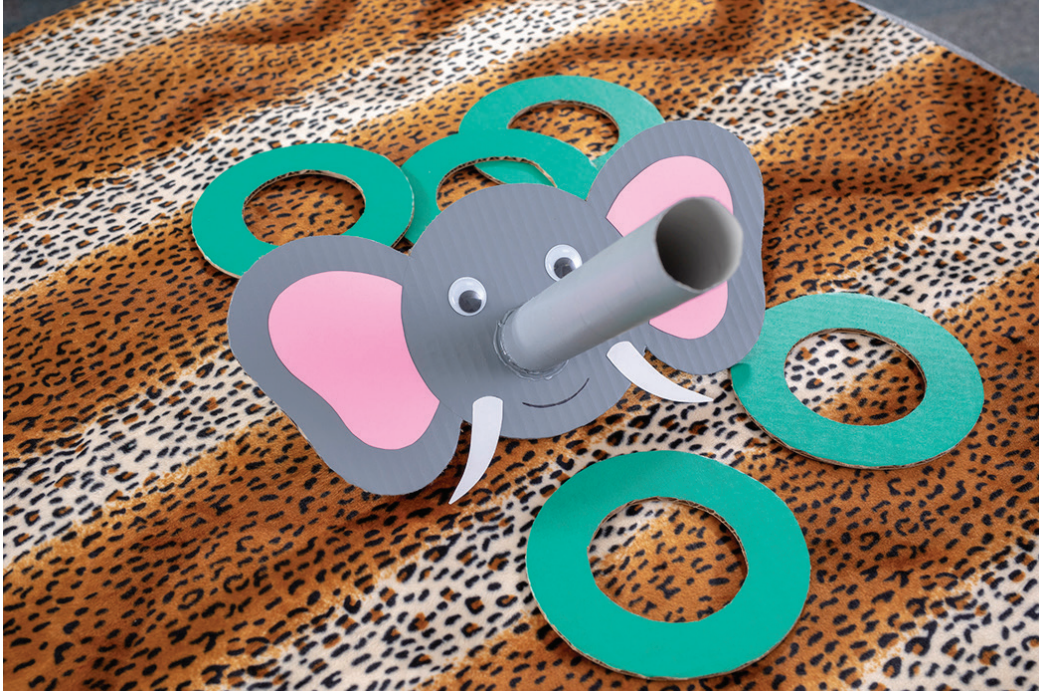


Jungle Elephant Ring Toss



Supplies:

- Cardboard
- Paper towel roll
- Hot glue
- Utility knife
- Gray paint
- Green paint
- Pink paper
- White paper
- Scissors
- Large googly eyes
- Black permanent marker

Directions:

1. Cut out the elephant head and ears shapes from cardboard. *(For safety purposes, we recommend wearing leather gloves when using the utility knife. Never leave the utility knife where children can pick it up.)*
2. Hot glue a paper towel roll to the face standing up.
3. Paint the head, ears and trunk gray.
4. Cut out the inner ear shape from pink paper and glue in place.
5. Cut out the tusks from white paper and glue in place.
6. Hot glue a pair of large googly eyes in place.
7. Draw on a mouth with a black marker.
8. Trace a plate on cardboard to get a large circle, approximately 8" in diameter.
9. Trace a smaller inner circle approximately 5" in diameter inside the first circle. Cut out the ring and repeat for as many rings as you want, 4 to 6 is suggested.
10. Paint the rings green or other colors.